



This instruction manual refers to the above stripper.

It contains important information on its operation and handling.

Take this into account when you pass the product on to third parties.

Keep these instructions for future reference!

Table of contents

Warnings	3
Description	3
Applications	3
Technical data	4
Accident prevention regulations 1.2 noise (VGB 121)	4
Introduction	4
Risks when handling the machine	4
Use compliant with intended purpose	5
Original spare parts and safety	5
Warranty	5
Description of the operating station	5
Use	6
Selecting/Installing/Changing the blade	6
Transport	7
Servicing and maintenance	7
Electrical diagram	7
CE Declaration of Conformity	8

Warnings

Caution: the ROMUS flooring stripper is manufactured in accordance with the applicable European directives. Guards and protective devices must under no circumstances be removed or modified. When using the machine, attention should be paid to the following points:

1. Read the instruction manual before using the appliance.
2. The stripper must always be used in accordance with safety rules and technical instructions.
3. The stripper must always be turned off and disconnected when transporting, cleaning and carrying out repair or maintenance operations. This also applies when changing tools.
4. The operator must never leave the machine unattended when it is operating.
5. Before leaving the machine, ensure that everything has been disconnected.
6. After maintenance or adjustment, all safety components must be put back in place.
7. Ear defenders must be worn.
8. Eye protectors must be worn.
9. Safety shoes must be worn.
10. Cut-resistant gloves must be worn.
11. If a large amount of dust is produced during work, it is recommended to use a vacuum cleaner or other dust collector along with suitable breathing apparatus.
12. Depending on the type of floor, the removal operation may produce gases. The operator is responsible if gases are generated and if it is necessary to wear protective devices and clothing. The removal of some floors may produce substances which are harmful to health. Special and suitable respiratory protection equipment must be worn. In this case, a dust collector must be used.
13. The floor should be swept before removal, as certain materials or waste may be projected. Screws and bolts in the floor will be more visible if it is cleaned. If the machine hits screws or bolts, it may be seriously damaged.
14. Only use the machine indoors and do not store it outdoors or in a damp area.
15. Only use blades which are in perfect condition and suited to the intended use.
16. The machine should only be serviced by qualified persons.
17. Use only original spare parts.
18. Dismantling of the electrical box is strictly prohibited.

Description

Electrically-powered flooring stripper. A motor drives a blade that shears the film of glue between the floor and the floor covering.

Applications

For removing all types of flexible floor covering, such as PVC, linoleum, carpets, rubbers, etc.

Technical data

Voltage (V):	230
Frequency (Hz):	50
Power (W):	2,200
Revolutions per minute (rpm):	6,500
Weight (kg):	20 kg
Sound power level (dB):	95 dbA

Delivered with:

Ref. 94542 straight blade, 210 mm, thickness 1 mm

Ref. 94541 straight blade, 230 mm, thickness 1.8 mm

Ref. 94885 anti-noise protective headphones. Overall sound reduction index 27 dB. EN 352-1

An open-end wrench

Accident prevention regulations 1.2 noise (VGB 121)

The contractor is responsible for providing insured persons working in the area subject to noise with suitable anti-noise protective equipment.

The insured persons are responsible for using the anti-noise protective equipment in the area subject to noise. Working without anti-noise protective equipment can be harmful to health. In particular, this can cause a risk or damage to hearing or increase the risk of accidents.

Introduction

The operating instructions will help you get to know your ROMUS stripper and make the best use of it. You will find valuable information which will enable you to recognise dangerous situations in time, and to avoid them.

In this way, you will help not only to protect your own safety but also to reduce repair costs and increase the service life of your machine.

This instruction manual must be read and understood by all individuals using this machine, including those involved in its maintenance.

Risks when handling the machine

The ROMUS stripper is manufactured in accordance with the technical regulations of the applicable European directives.

Incorrect use may cause injury to the operator. See the section on using the appliance.

Use compliant with intended purpose

The ROMUS stripper is designed exclusively for stripping floor coverings in dry rooms. Usage other than for this purpose or over and above it shall be deemed non-compliant with the intended purpose and ROMUS shall not be liable under the warranty for any resulting damage.

Original spare parts and safety

Original spare parts and accessories are specially designed for the ROMUS stripper. Your attention is drawn to the fact that other parts must not be used. This can adversely affect the safety of the machine.

This is especially applicable to the blade of the machine. ROMUS declines all responsibility for damages caused by the use of non-original spare parts.

Warranty

The machine was delivered to the user in accordance with the conditions valid at the time of purchase. The user may not modify the machine for any reason. In the event of defects, the user should contact the

ROMUS after-sales department. Any attempt by a user or unauthorised staff member to dismantle or modify a component leads to expiry of the warranty, and ROMUS shall not be liable for any damage or injury to the persons and objects concerned by these modifications. Thus, ROMUS shall not be liable in the following cases:

Faulty installation:

- Incorrect use of the machine by staff members who have not received appropriate training
- Use contrary to the standards in force in the country of use
- Recommended maintenance not carried out or poorly carried out
- Use of non-original spare parts or spare parts which do not correspond to the model
- Total or partial non-compliance with instructions.

Description of the operating station

The operator stands upright behind the machine, with both hands on the handgrips and the abdomen on the cushion.

It is recommended to pass the power cable over the shoulder, in order to avoid damaging it when the machine is moving



Use

Floor stripping method:

1. Ensure that the system is not connected to a power supply.
2. Set the handle to a comfortable height by pulling on the button located underneath and in the middle of the handle
3. Select and install a blade suitable for the type of floor covering in question.
4. Ensure that the motor trigger is locked in the pushed-in position and then connect the motor lead on the handle.
5. Plug the handle power cable into a mains socket.
6. Press on the handle's red side handgrip to start the machine.
7. Push on the handle to slide the blade under the floor covering.
8. The blades sharpen themselves when in contact with the substrate. However, it is recommended that their condition be checked before each use. This is why the blade must be changed if it is twisted or worn excessively.

Selecting/Installing/Changing the blade

Only use ROMUS blades which are compatible with the machine.

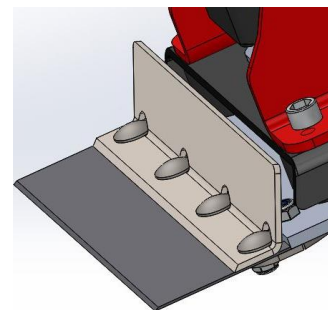
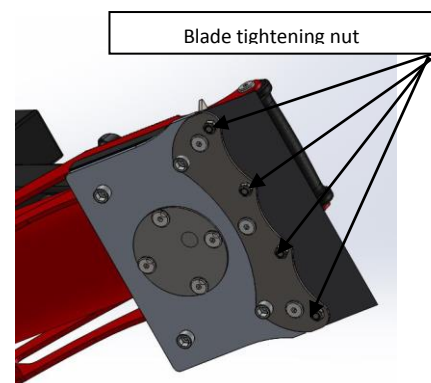
U-shaped blades (ref. 94543) are used for flexible materials laid in strips. Flat blades (ref. 94541 and ref. 94542) are used for tile-form and/or brittle materials, with the bevel on the floor.

To remove materials with a foam backing, use very sharp (new) blades and remove the foam during the first round, as it will be generally impossible to remove it with the stripper if the rigid part has already been removed.

Before changing the blade, remove the mains plug from the mains socket.

Warning! The blades are very sharp and there is a major risk of injury. Wear cut-resistant gloves.

1. Disconnect the machine.
2. Tip the machine backwards until the handle is resting on the floor.
3. Using the wrench provided, loosen the 4 nuts situated under the blade holder by turning them a few times. Never completely remove the nuts.
4. Pull the blade forward to remove it from the blade holder.
5. Position the new blade, making sure that it is correctly inserted into the blade holder
6. Tighten the nuts using the wrench provided.

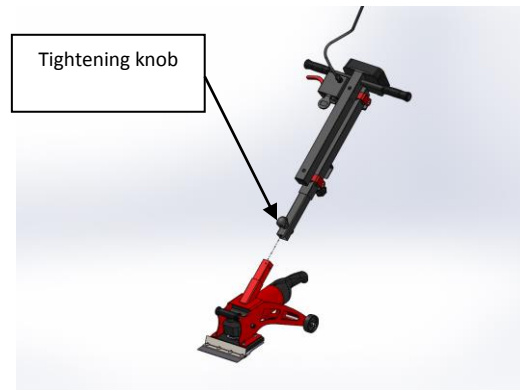


Transport

Disconnect the machine from all mains sockets before carrying out dismantling operations
Remove the blade before all transport operations

To dismantle the ROMUS stripper:

Disconnect the machine from all mains sockets to which it is connected
 Remove the blade
 Loosen the button at the base of the handle
 Separate the handle from the machine



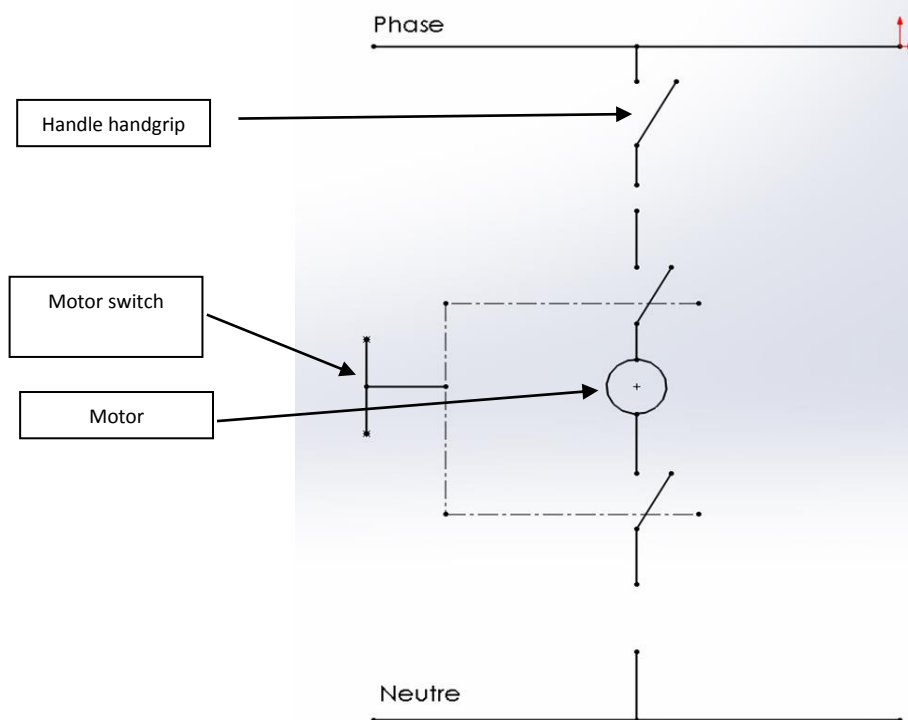
To assemble the ROMUS stripper:

Ensure that the mains plug is not plugged into a mains socket.
 Ensure that no blade is fitted
 Position the handle on the red tube
 Tighten the button at the base of the handle securely

Servicing and maintenance

The ROMUS stripper requires practically no maintenance if you take proper care of it.
 Be careful not to introduce water or oil into the motor.
 Clean your machine every day using a dry cloth.

Electrical diagram



CE Declaration of Conformity

The undersigned design and production company

ROMUS

13/15 rue du Taillefer ZA Les POUARDS

91160 CHAMPLAN

Hereby declares, under its own responsibility, that the product

Type: BS-5 Stripper

Model: 94563

to which this declaration pertains, complies with the following directives:

- 2006/42/CE Machines
- 2004/108/CE Electromagnetic Compatibility Directive